

2014-06-07

Topology of the Misner space and its g-boundary

Margalef Bentabol, Juan

Springer US

General Relativity and Gravitation, 2014, 46 (7), 1755.

<http://hdl.handle.net/10016/24595>

Descargado de e-Archivo, repositorio institucional de la Universidad Carlos III de Madrid



Universidad
Carlos III de Madrid



This is a postprint version of the following published document:

Margalef-Bentabol, J. & S. Villaseñor, E.
J. (2014). Topology of the Misner space
and its g-boundary. *General Relativity and
Gravitation*, 46 (7), 1755.

DOI: [10.1007/s10714-014-1755-6](https://doi.org/10.1007/s10714-014-1755-6)

© Springer Science+Business Media New York 2014

Topology of the Misner space and its g -boundary

Juan Margalef-Bentabol · Eduardo J. S. Villaseñor

Abstract

The Misner space is a simplified 2-dimensional model of the 4-dimensional Taub-NUT space that reproduces some of its pathological behaviours. In this paper we provide an explicit base of the topology of the complete Misner space $\mathbb{R}^{1,1}/\text{boost}$. Besides we prove that some parts of this space, that behave like topological boundaries, are equivalent to the g -boundaries of the Misner space.

Keywords Misner space · g -Boundary · Spacetime topology

1 Introduction

The Taub-NUT space-time is a spatially homogenous vacuum solution to the Einstein equations that displays many strange behaviours. In order to understand some of its pathologies C.W. Misner introduced in a seminar entitled *Taub-NUT space as a counterexample to almost anything* [14], a simpler 2-dimensional model, the so-called **Misner space**. This space-time has still some strange behaviours that have

J. Margalef-Bentabol

Instituto de Estructura de la Materia, CSIC, Serrano 123, 28006 Madrid, Spain

J. Margalef-Bentabol (✉)

Unidad Asociada al IEM-CSIC, Grupo de Teorías de Campos y Física Estadística, Instituto Universitario Gregorio Millán Barbany, Grupo de Modelización y Simulación Numérica, Universidad Carlos III de Madrid, Madrid, Spain
e-mail: juanmargalef@ucm.es

E. J. S. Villaseñor

Unidad Asociada al IEM-CSIC, Grupo de Teorías de Campos y Física Estadística,

Instituto Universitario Gregorio Millán Barbany, Grupo de Modelización y Simulación Numérica, Universidad Carlos III de Madrid, Madrid, Spain

e-mail: ejsanche@math.uc3m.es

been carefully studied in [8,17], and besides, it has been used as a toy-model for different purposes like big bounce models [1,9].

The geometrical and topological properties of Misner space can be derived by constructing it in terms of the quotient space $\mathbb{R}^{1,1}/\text{boost}$. Following this approach, we do not only recover the Misner space but also prove that some subsets of it behave like the g -boundaries introduced by Hawking [7] and Geroch [3]. It is important to point out that the abstract definition of the g -boundary of a semiriemannian manifold is highly non trivial and, in practice, it is very difficult to compute it from the definition. In fact, in [3] and [6] some examples are obtained but no computation is provided. This construction has an even worse problem: whenever a boundary construction verifies, as the g -boundary does, some reasonable conditions, then a space-time can be constructed with unphysical boundary [5]. Even the fact of being defined using geodesics is not satisfactory owing to an example due to Geroch [4] of a geodesically complete space-time containing curves of finite length and bounded acceleration (hence there exist physical time-like observers that are incomplete). In part due to these problems, the study of this and similar constructions has been essentially abandoned. We think, however, that it is still interesting to verify that in the case of the complete Misner space, the g -boundary is what one expects to be. Besides, for some of these completions, such as for the g -boundary, there exists a canonical way of defining a minimal refining of the topology such that the points of the boundary become T2-separated from all the rest of the points [2] removing some of the worst problems of these constructions; hence, they may regain some interest in the recent future.

The paper is structured as follows, in Sect. 2 we carefully study the Misner space as a quotient space, providing an explicit base of the quotient topology and deducing from it some topological properties (and problems). In Sect. 3 we discuss, in some detail, the behaviour of the light-like geodesics in the extended Misner space. The concept of the g -boundary is introduced in Sect. 4 and apply it to the the Misner space. We show that the topology defined by the g -boundary coincides, precisely, with the quotient topology obtained in Sect. 2. We end this paper in Sect. 5 with the discussion of the main results and our conclusions. For the convenience of the reader, we also provide two appendices where the necessary mathematical background is presented.

2 The Misner space as a quotient space

In this section, we construct the Misner space M by considering the quotient space of the Minkowski space-time $\mathbb{R}^{1,1} = (\mathbb{R}^2, -dT^2 + dX^2)$ under a discrete group G_{θ_0} of Lorentz boosts. In this approach, M arises as the quotient space $\{T > |X|\}/G_{\theta_0}$ (or, equivalently $\{-T > |X|\}/G_{\theta_0}$), which will allow us to understand the pathological behaviour of its geodesics. Moreover, by considering the quotient over two adjacent quadrants of $\mathbb{R}^{1,1}$ plus the line in between them (e.g $\{T < X\}/G_{\theta_0}$), we get an isometric extension C of M , that we will refer to as the *extended Misner space*. This extension *partially* solves the geodesic incompleteness problem of M . However, as we will see, it is not possible to extend C further to completely solve the the geodesic incompleteness.

2.1 General facts about the Misner space

The Lorentz group $O_{1,1}(\mathbb{R})$ is formed by the linear maps $H : \mathbb{R}^2 \rightarrow \mathbb{R}^2$, which preserve the Minkowski product $\langle P_1, P_2 \rangle = -T_1T_2 + X_1X_2$. The subgroup composed by the space-orientation preserving and the time-orientation preserving maps is called **special orthochronous Lorentz group**:

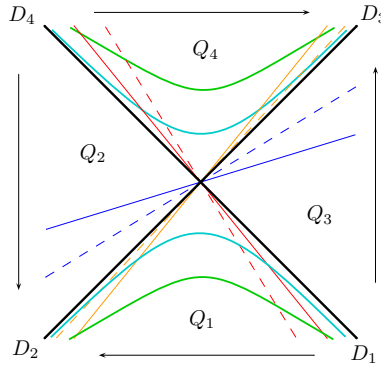
$$SO_{1,1}^+(\mathbb{R}) = \left\{ H_\theta = \begin{pmatrix} \cosh \theta & \sinh \theta \\ \sinh \theta & \cosh \theta \end{pmatrix} / \theta \in \mathbb{R} \right\} = \left\{ H_\theta = \begin{pmatrix} \gamma_\theta & v_\theta \gamma_\theta \\ v_\theta \gamma_\theta & \gamma_\theta \end{pmatrix} / \theta \in \mathbb{R} \right\},$$

where $v_\theta = \tanh \theta$ is the velocity of one inertial frame with respect to another one, θ can be interpreted as the rapidity [12] and, as usual, $\gamma_\theta = \frac{1}{\sqrt{1-v_\theta^2}}$. The boosts matrices

H_θ satisfy the following:

Properties

P.1 As H_θ is linear, it maps lines (through the origin) to lines (through the origin), and it has as invariant lines the diagonals $\{X = \pm T\}$. Indeed each semi-line is invariant.



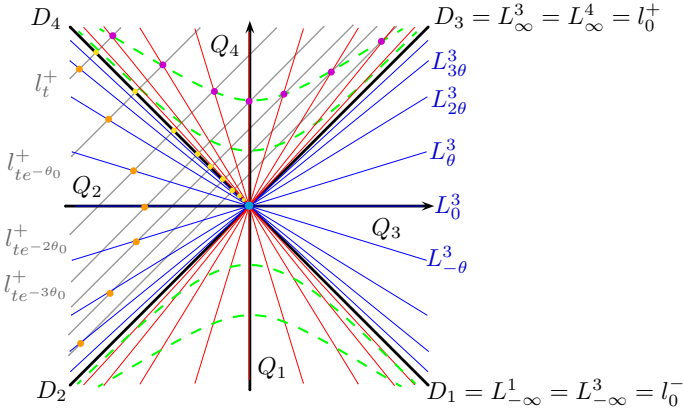
P.2 $H_\theta(L_\psi^i) = L_{\psi+\theta}^i$ where for a fixed given quadrant Q_i , we denote L_ψ^i the open semi-line in Q_i that begins at the origin with hyperbolic angle ψ . From now on, Q_i is the corresponding open quadrant (in between the diagonals) and D_i is the corresponding open semi-diagonal where the origin is excluded.

P.3 $H_\theta(l_{T_0}^\pm) = l_{T_0 e^{\mp\theta}}^\pm$ where $l_{T_0}^\pm$ is the line with slope ± 1 that cuts the semi-diagonal at the point $(T, X) = (T_0, \mp T_0)$.

P.4 For $r \geq 0$, the sets

$$\mathcal{H}_r^\pm = \{(T, X) \in \mathbb{R}^2 / -T^2 + X^2 = \pm r^2\}$$

are invariant. Notice that for $r > 0$, the hyperbolas \mathcal{H}_r^- are space-like and \mathcal{H}_r^+ are time-like.



If $\theta_0 > 0$ then $G_{\theta_0} = \langle H_{\theta_0} \rangle$ is an infinite cyclic group, and for every $P = (T, X) \neq (0, 0)$, the orbit $G_{\theta_0}(P)$ is an infinite countable set. This action over D_i is properly discontinuous and free. In particular, if $P_0 = (T_0, \pm T_0) \in D_i$, then:

$$P_n = (H_{\theta_0})^n(P) = H_{n\theta_0}(P) = (T_0 e^{\pm n\theta_0}, \pm T_0 e^{\pm n\theta_0}).$$

Thus, for forward iterations, the points over the diagonal $\{T = -X\}$ accumulate over the origin exponentially while the points over the diagonal $\{T = X\}$ grow to infinity exponentially. By using the exponential map $\exp: \mathbb{R} \rightarrow \mathbb{R}^+, x \mapsto e^x = |T_0|$, it is clear that each of the quotient spaces $\tilde{D}_i = D_i/G_{\theta_0}$ is homeomorphic to a circle $\mathbb{S}^1 \cong \mathbb{R}/\text{mod } \theta_0$.

The action of G_{θ_0} over Q_i is also properly discontinuous and free. In particular $M_{\theta_0}^- = Q_1/G_{\theta_0}$ (resp. $M_{\theta_0}^+ = Q_4/G_{\theta_0}$) is a smooth Hausdorff manifold homeomorphic to the cone $\mathbb{R}^- \times \mathbb{S}^1$ (resp. $\mathbb{R}^+ \times \mathbb{S}^1$). In fact, by expressing the Minkowski metric in hyperbolic coordinates $(T, X) = (t \cosh(x), t \sinh(x))$ the action of G_{θ_0} is given by $H_{\theta_0}(t, x) = (t, x + \theta_0)$ and the metric in $M_{\theta_0}^\pm$ is:

$$dm_\pm^2 = -dt^2 + t^2 dx^2, \quad (t, x) \in \mathbb{R}^\pm \times (\mathbb{R}/\text{mod } \theta_0).$$

In particular, the circles $\{t = t_0\} \subset M_{\theta_0}^\pm$ are space-like. Notice that for $\theta_0 = \pi$, both M_π^\pm are isometric to the Misner space:

$$dm^2 = -\frac{dt^2}{t'} + t' d\theta'^2, \quad (t', \theta') \in \mathbb{R}^+ \times (\mathbb{R}/\text{mod } 2\pi).$$

The future directed light-like geodesics over the Misner space $M_{\theta_0}^-$ are:

$$\gamma_\pm(\tau) = \left(t(\tau), x(\tau) \right) = \left(-|t_0| \sqrt{1 - 2|\dot{x}_0|\tau}, x_0 \pm \frac{1}{2} \log(1 - 2|\dot{x}_0|\tau) \right),$$

where we have replaced t_0 by $-|t_0|$ in order to emphasize that t ranges over $\mathbb{R}^- = (-\infty, 0)$. The geodesics satisfy $i > 0$, $\dot{t}_0 = |\dot{x}_0||t_0|$, and $\text{sign}(\dot{x}) = \mp 1$. Summarizing,

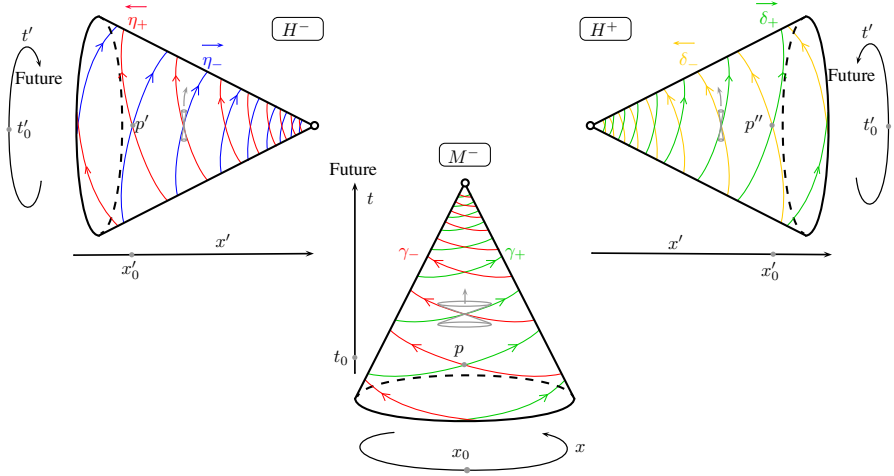


Fig. 1 All the light-like geodesics turn around the semi-cylinder infinitely many times. The apex is in the future for both γ_{\pm} and for δ_{-} and η_{+} while it is in the past for δ_{+} and η_{-}

we have that the two future directed light-like geodesics obtained are incomplete as $\tau \in (-\infty, \frac{1}{2|x_0|})$, but notice that, as x is increasing and grows to infinite, they turn around the cylinder infinitely many times. We can see graphically the behaviour of the geodesics γ_{\pm} in Fig. 1, the closer to $\mathbb{S}^1 \times \{0\}$ (which corresponds to the apex, and hence it does not belong to $M_{\theta_0}^-$), the quicker with respect to the affine parameter a light-like geodesic turns around the cylinder.

Similarly, $H_{\theta_0}^- = Q_2/G_{\theta_0}$ (resp. $H_{\theta_0}^+ = Q_3/G_{\theta_0}$) is a smooth Hausdorff manifold homeomorphic to the cone $\mathbb{S}^1 \times \mathbb{R}^{\pm}$. In hyperbolic coordinates $(T, X) = (x' \sinh(t'), x' \cosh(t'))$, the metric in $H_{\theta_0}^{\pm}$ is

$$dh_{\pm}^2 = -x'^2 dt'^2 + dx'^2, \quad (t', x') \in (\mathbb{R}/\text{mod } \theta_0) \times \mathbb{R}^{\pm}.$$

In this case, the circles $\{x' = x_0\}$ are time-like. The future directed light-like geodesics over $H_{\theta_0}^+$ are:

$$\delta_{\pm}(\tau) = \left(t'(\tau), x'(\tau) \right) = \left(t_0 \pm \frac{1}{2} \log(1 \pm 2i_0 \tau), x_0 \sqrt{1 \pm 2i_0 \tau} \right),$$

$$\begin{cases} \tau \in \left(-\frac{1}{2i_0}, +\infty \right) & \text{for } \delta_+, \\ \tau \in \left(-\infty, \frac{1}{2i_0} \right) & \text{for } \delta_-. \end{cases}$$

Notice that now t is the periodic coordinate and we have $i > 0$, and $\pm \dot{x}_0 = x_0 i_0 > 0$. The light-like geodesics η_{\pm} of H^- would have the same expressions (we could replace x_0 by $-|x_0|$) with η_- aiming also towards the apex.

If we now consider the quotient over the whole plane, $Y_{\theta_0} = \mathbb{R}^2/G_{\theta_0}$, we do not obtain a smooth manifold as the origin is a fixed point, furthermore some other

problems arise as we will see in Sect. 2.4. However the action over one of the semi-planes $S^\pm = \{T < \pm X\}$ is free and properly discontinuous, so the quotient is a smooth Hausdorff manifold which topologically is homeomorphic to two cones without the apex (one for each quadrant) and a circle corresponding to the semi-diagonal. The cones can be deformed into semi-cylinders and glued along the circle to obtain a whole cylinder. In particular, the metric in the **extended Misner space** $C_{\theta_0}^+ = S^+/G_{\theta_0} \cong \mathbb{R} \times \mathbb{S}^1$ can be written as:

$$ds_+^2 = -z d\vartheta_+^2 - 2d\vartheta_+ dz, \quad (z, \vartheta_+) \in \mathbb{R} \times (\mathbb{R}/\text{mod } 2\theta_0),$$

where the coordinates (z, ϑ_+) are related to those on $M_{\theta_0}^-$ and $H_{\theta_0}^+$ through

$$(z, \vartheta_+) = \begin{cases} \left(-\frac{t^2}{4}, 2x - 2 \log(-t) \right) & \text{if } (t, x) \in M_{\theta_0}^-, \\ \left(\frac{x'^2}{4}, 2t' - 2 \log(x') \right) & \text{if } (t', x') \in H_{\theta_0}^+. \end{cases}$$

Notice that the light-like circle $\{z = 0\} \subset C^+$ corresponds to D_1/G_{θ_0} . On the other hand, the metric in the **extended Misner space** $C_{\theta_0}^- = S^-/G_{\theta_0} \cong \mathbb{R} \times \mathbb{S}^1$ is:

$$ds_-^2 = -z d\vartheta_-^2 + 2d\vartheta_- dz, \quad (z, \vartheta_-) \in \mathbb{R} \times (\mathbb{R}/\text{mod } 2\theta_0),$$

where

$$(z, \vartheta_-) = \begin{cases} \left(-\frac{t^2}{4}, 2x + 2 \log(-t) \right) & \text{if } (t, x) \in M_{\theta_0}^-, \\ \left(\frac{x'^2}{4}, 2t' + 2 \log(-x') \right) & \text{if } (t', x') \in H_{\theta_0}^-. \end{cases}$$

In this case the light-like circle $\{z = 0\} \subset C^-$ corresponds to D_2/G_{θ_0} .

From now on, let us focus on C^+ . The light-like geodesics γ_\pm can be expressed using $\{z, \vartheta_-\}$ -coordinates to give the future directed ($\dot{z} > 0$) light-like geodesics γ_\pm of M^- passing through $z_0 = -|z_0| < 0$:

$$\begin{aligned} \tilde{\gamma}_+(\tau) &= \left(z(\tau), \vartheta_+(\tau) \right) = \left(\dot{z}_0 \tau - |z_0|, \vartheta_0 \right), \\ \tilde{\gamma}_-(\tau) &= \left(z(\tau), \vartheta_+(\tau) \right) = \left(\dot{z}_0 \tau - |z_0|, \vartheta_0 - 2 \log \left(1 - \frac{\dot{z}_0}{|z_0|} \tau \right) \right), \end{aligned} \quad \tau \in \left(-\infty, \frac{|z_0|}{\dot{z}_0} \right).$$

Similarly, the future directed light-like geodesics δ_\pm of H^+ passing through $z_0 > 0$ are:

$$\begin{aligned} \tilde{\delta}_+(\tau) &= \left(z(\tau), \vartheta_+(\tau) \right) = \left(\dot{z}_0 \tau + z_0, \vartheta_0 \right), 0 \\ \tilde{\delta}_-(\tau) &= \left(z(\tau), \vartheta_+(\tau) \right) = \left(z_0 - |\dot{z}_0| \tau, \vartheta_0 - 2 \log \left(1 - \frac{|\dot{z}_0|}{z_0} \tau \right) \right), \end{aligned} \quad \tau \in \left(-\frac{z_0}{\dot{z}_0}, \infty \right),$$

$$\tau \in \left(-\infty, \frac{z_0}{|\dot{z}_0|} \right),$$

where notice that now $(\dot{z}) = \pm 1$. Clearly $\tilde{\gamma}_+$ and $\tilde{\delta}_+$ can be extended to $\tau \in \mathbb{R}$, in fact, they can be glued together through its limit point at the $z = 0$ level. However the geodesics $\tilde{\gamma}_-$ and $\tilde{\delta}_-$ cannot be extended and remain incomplete. Notice that $\dot{\vartheta}_+ \geq$ for all the geodesics.

We see that we have partially solved our “pathology” as we have managed to “unwrap” $\tilde{\gamma}_+$ and $\tilde{\delta}_+$, but we have “wrapped twice” $\tilde{\gamma}_-$ and $\tilde{\delta}_-$. The $z_0 = 0$ case has to be studied separately:

Remark 2.1 The future directed light-like geodesics with $z_0 = 0$ are

$$\begin{cases} \tilde{\rho}_+(\tau) = \left(\dot{z}_0 \tau, \vartheta_0 \right), & \tau \in \mathbb{R}, \\ \tilde{\rho}_-(\tau) = \left(0, \vartheta_0 - 2 \log \left(1 - \frac{\dot{\vartheta}_0}{2} \tau \right) \right), & \tau \in \left(-\infty, \frac{2}{\dot{\vartheta}_0} \right). \end{cases}$$

$\tilde{\rho}_+$ is exactly the complete $\tilde{\gamma}_+$ and $\tilde{\delta}_+$ glued through their limit point, while $\tilde{\rho}_-$ is incomplete, remains always in the subset $\mathbb{S}^1 \times \{0\}$ and verifies $\dot{\vartheta}_- > 0$ (as well as $\tilde{\gamma}_-$ and $\tilde{\delta}_-$). Furthermore it verifies a quite astonishing property. For a given τ_0 if we define a τ_k for every $k \in \mathbb{Z}$ such that:

$$\left(1 - \frac{\dot{\vartheta}_0}{2} \tau_0 \right) = \left(1 - \frac{\dot{\vartheta}_0}{2} \tau_k \right) e^{k\theta_0},$$

then we have that for every $k \in \mathbb{Z}$:

$$\tilde{\rho}_+(\tau_0) = \tilde{\rho}_+(\tau_k), \quad \dot{\tilde{\rho}}_+(\tau_0) \neq \dot{\tilde{\rho}}_+(\tau_k).$$

Hence the curve passes infinitely many times through the same point $\tilde{\rho}_+(\tau_0)$ but with “longer” tangent vector (but notice that its modulus remains constant and equal to zero!).

For the $\{t, \psi_-\}$ extended coordinates we have analogous results, although now the roles of each pair of geodesics are exchanged, and of course, we have to consider H^- and η_\pm instead of H^+ and δ_\pm (see Fig. 2). Besides, this construction can be used to obtain an incomplete compact spacetime [10, p. 77] by gluing a positive slice $\{z = cte_+\}$ and a negative one $\{z = cte_-\}$ with a suitable deformation, obtaining a torus with the $\{z = 0\}$ slice in it.

We see then that we have two inequivalent inextensible extensions of M^- , however they both turn out to be again incomplete. Once at that point we should try to understand why this happens and if it is possible to find an even better coordinate system to solve the pathology completely. Notice that in order to extend the space-time M^- , we have followed the incomplete geodesics and we have defined a new coordinate to extend them, so one might wonder if we can do the same over the extensions C^\pm and find where the wrapped geodesics go. It is not hard to believe that they go to the upper cone (isometric to the lower one under the mapping $t \mapsto -t$, see figure in Sect. 3) but if we apply the same technique to solve the double wrapped geodesics, we will find that the

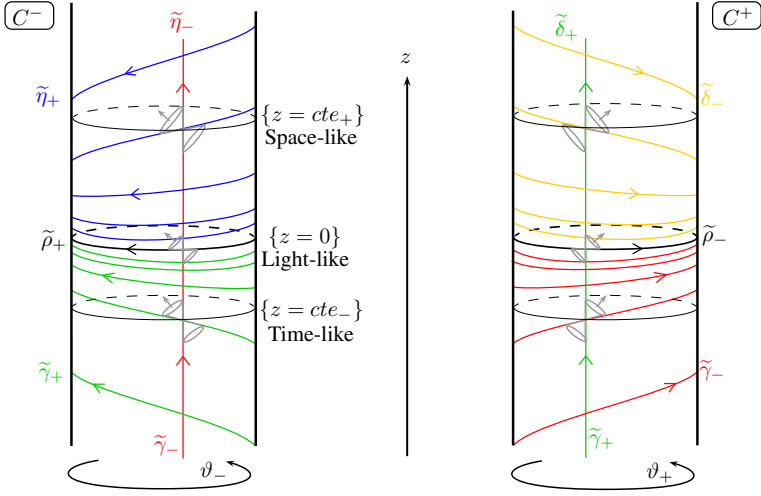


Fig. 2 C^- is the result of gluing the lower cone M^- and the left one H^- while C^+ is obtained by gluing M^+ and H^+ . A similar picture can be found on page 172 of [8] but notice that there, the cones involved are the lateral and the upper ones, hence the time-like and space-like sections are exchanged.

already “straight” ones, become wrapped again. Actually, as we mentioned before, no further extension exists and here is where topology will turn out to be essential to understand why the pathological behaviour appears in the first place and why we can partially, but not completely, get rid of it.

2.2 Topology induced by the discrete hyperbolic rotation

We will now provide a local base for the topology of the complete Misner space $\mathbb{R}^{1,1}/boost$. To this end we are going to consider some local base of \mathbb{R}^2 and saturate their open sets to obtain a base of the quotient topology (see Lemma A.5 of Appendix A).

$P \in Q_i$ In local hyperbolic coordinates $P \in Q_i \subset \mathbb{R}^2$ can be written as (r_0, ψ_0) . Let us define

$$B_1(P, \varepsilon) = \{(r, \psi) \in Q_i : r \in (r_0 - \varepsilon, r_0 + \varepsilon) \quad \psi \in (\psi_0 - \varepsilon, \psi_0 + \varepsilon)\} .$$

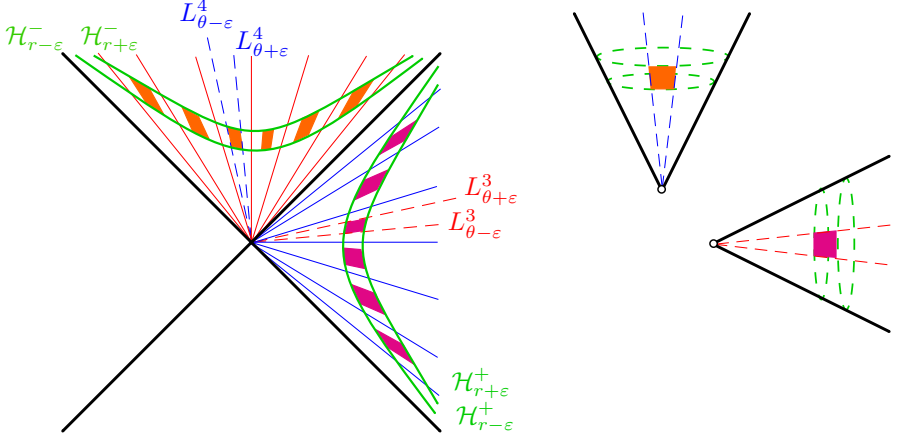
Using P.1–P.4, we have

$$H_{n\theta_0}(B_1(P, \varepsilon)) = B_1(H_{n\theta_0}(P), \varepsilon) .$$

In order to saturate, we have to join all this possible images (see Remark A.12):

$$S_{\sim}[B_1(P, \varepsilon)] = \bigcup_{n \in \mathbb{Z}} B_1(H_{n\theta_0}(P), \varepsilon) .$$

Finally we consider the local base $\beta(P) = \{B_1(P, \varepsilon)\}_{\varepsilon \in (0, \varepsilon_P)}$ for every $P \in Q_i$ with $\varepsilon_P > 0$ small enough such that $B_1(P, \varepsilon)$ does not contain two related points (hence the union is disjoint). If we now look at the glued space, we have simply an open “squared” ball over the cone.



$P \in D_i$ Let $P = (T_0, T_0) \in D_3$ (analogously for the remaining D_i just changing some signs), we define

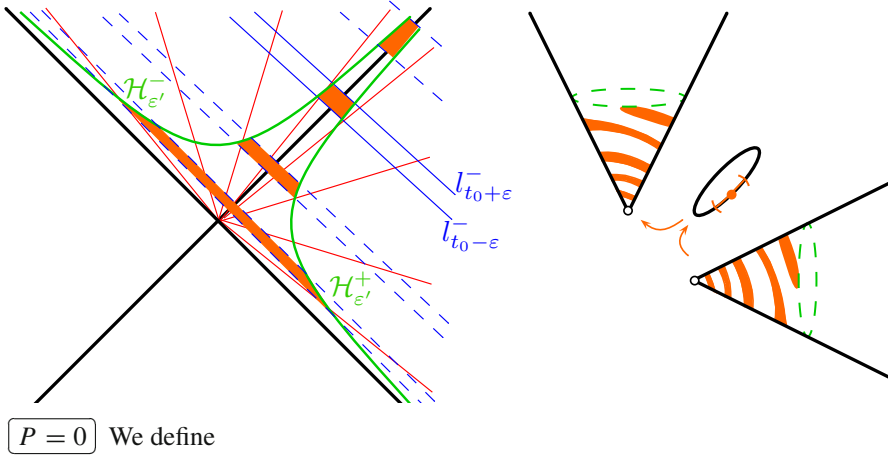
$$B_2(P, \varepsilon, \varepsilon') = \left(\bigcup_{\delta \in (-\varepsilon, \varepsilon)} l_{T_0+\delta}^- \right) \cap \left(\left[\bigcup_{r \in [0, \varepsilon']} \mathcal{H}_r^+ \right] \cup \left[\bigcup_{r \in [0, \varepsilon']} \mathcal{H}_r^- \right] \right).$$

Using P.1-P.4 we have $H_{n\theta_0}(B_2(P, \varepsilon, \varepsilon')) = B_2(H_{n\theta_0}(P), \varepsilon e^{n\theta_0}, \varepsilon')$ and then

$$S_\sim[B_1(P, \varepsilon, \varepsilon')] = \bigcup_{n \in \mathbb{Z}} B_1(H_{n\theta_0}(P), \varepsilon e^{n\theta_0}, \varepsilon').$$

Finally we take the local base $\beta(P) = \{B_2(P, \varepsilon, \varepsilon')\}_{\varepsilon \in (0, \varepsilon_P), \varepsilon' > 0}$ with ε_P small enough such that $B_2(P, \varepsilon, \varepsilon')$ does not contain the origin and does not contain two related points.

As the ball $B = B_2(P, \varepsilon, \varepsilon')$ is a bunch of (finite piece of) light-like geodesics each one having a piece over Q_4 , a piece over Q_2 , and a point over the diagonal D_3 , hence over the glued space we have a bunch of geodesics each having a piece over M^+ , a piece over H^+ and a point over \tilde{D}_3 . Therefore given a point $q \in \tilde{D}_i$, any basic open neighbourhood U over the glued space is an open interval over \tilde{D}_i , together with two “thickened” geodesics (similar to $\tilde{\gamma}_\pm$), each one turning infinitely many times around the corresponding adjacent cone, where the direction of rotation is determined by the evolution of the geodesics over the universal cover as we explain in Sect. 3.



$$B_3(0, \varepsilon) = \left(\bigcup_{\delta \in (-\varepsilon, \varepsilon)} l_{\delta}^- \right) \cap \left(\bigcup_{\delta \in (-\varepsilon, \varepsilon)} l_{\delta}^+ \right) \cap \left(\left[\bigcup_{r \in [0, \varepsilon e^{-\theta_0})} \mathcal{H}_r^+ \right] \cup \left[\bigcup_{r \in [0, \varepsilon e^{-\theta_0})} \mathcal{H}_r^- \right] \right).$$

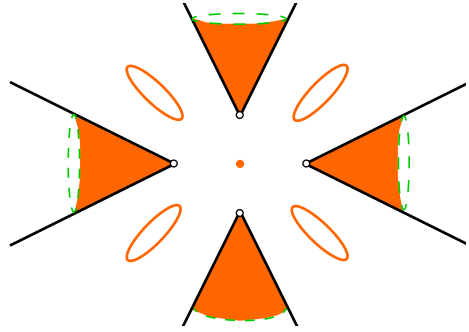
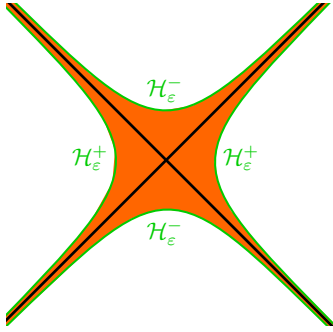
Using again *P.1–P.4* we obtain:

$$H_{n\theta_0}(B_3(0, \varepsilon)) \cup H_{-n\theta_0}(B_3(0, \varepsilon)) = B_3(0, \varepsilon e^{n\theta_0}).$$

Saturating it, we obtain the region in between the four branches of the hyperbolas $\mathcal{H}_{\varepsilon e^{-\theta_0}}^+$ and $\mathcal{H}_{\varepsilon e^{-\theta_0}}^-$ (pushing the lines to infinity):

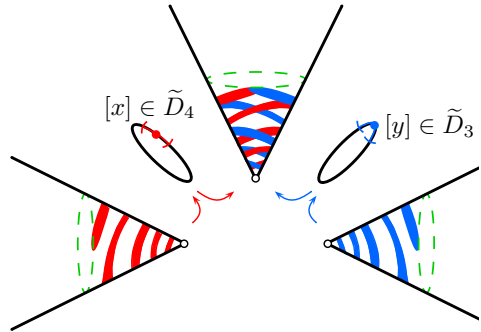
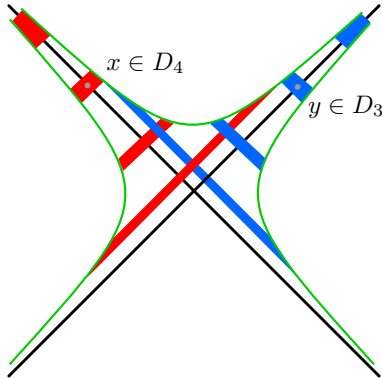
$$S_{\sim}[B_3(0, \varepsilon)] = \left[\bigcup_{r \in [0, \varepsilon e^{-\theta_0})} \mathcal{H}_r^+ \right] \cup \left[\bigcup_{r \in [0, \varepsilon e^{-\theta_0})} \mathcal{H}_r^- \right].$$

Each branch of the hyperbola correspond to a “straight” circle over each cone ($\{t = cte\}$ in the Misner space). Taking all the hyperbolas with $r \in (0, \varepsilon e^{-\theta_0})$ gives simply an annulus around the apex on each cone. The $r = 0$ case correspond to the diagonals, which in the glued space are the four circles plus the conic center. Hence a basic open neighbourhood of the origin is the point itself, the four circles and four annulus of “length” $\varepsilon e^{-\theta_0}$ on each cone.



2.3 Topological properties of the extended quotient

As every point has a countable base, the space $Y_{\theta_0} = \mathbb{R}^2/G_{\theta_0}$ is a first-countable space, indeed we can consider just the points with rational coordinates and we obtain that the space is in fact second-countable. When we restrict the action to one of the semi-planes $S^\pm = \{T < \pm X\}$ we obtain a smooth Hausdorff manifold, but whenever we extend the action including two adjacent semi-diagonals, we have that it is no longer Hausdorff, as can be seen taking (saturated) basic open sets $U \in \beta(x)$ and $V \in \beta(y)$ with $x \in D_4$ and $y \in D_3$. If we consider two points of the same diagonal without the origin, we can choose small enough neighbourhoods such that they do not overlap.



Moreover, as we see on the last image of the previous section, the origin cannot be separated from any point of the circles \tilde{D}_i as they are contained in any open neighbourhood of the origin. Let us then study which separation axioms does the quotient spaces verify (see Sect. 1):

Proposition 2.2

- The quotient space $Y_{\theta_0} = \mathbb{R}^2/G_{\theta_0}$ is T0 but not T1.
- The quotient space $Y_{\theta_0}^* = (\mathbb{R}^2 \setminus \{0\})/G_{\theta_0}$ is T1 but not T2.
- The quotient spaces $C_{\theta_0}^\pm = \{T < \pm X\}/G_{\theta_0}$ are T2.
- Every $x \in D_i$ (analogously of \tilde{D}_i) is not closed over Y_{θ_0} but it is closed over $Y_{\theta_0}^*$.

Proof The only tricky statement is the last one. First notice that removing the origin we have a T1 space, so we might expect that the origin fails to be closed, but surprisingly it is closed. However for every $x \in \tilde{D}_i$ we have that $\{x\}^c$ is not open. If we regard the universal cover, we see that the problem lies in the fact that the equivalence class $[x]$ of $x \in D_i$ is a countable set that accumulates over the origin but that does not contain it, so $[x]$ is not closed in \mathbb{R}^2 (but it is closed in $\mathbb{R}^2 \setminus \{0\}$, where it has no accumulation point) \square .

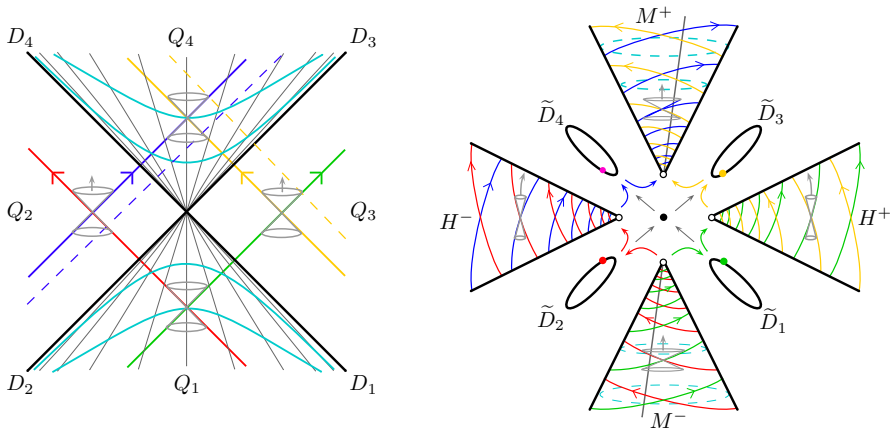
2.4 Problems with the extension of the group action

The statements made in the preceding sections allow us to know why the action group does not work nicely over some regions (see Definition B.2 of Appendix B). The action over the whole plane without the origin $\mathbb{R}^2 \setminus \{0\}$ is free and verifies *PD 1*, but it fails to satisfy *PD 2*. Here we see perfectly why the apparently weird property *PD 2* is required in order to ensure that the resultant manifold is Hausdorff. If we consider the action over the whole plain, we will not obtain a smooth manifold as the ~~origin~~ fixed point of H_{θ_0} , in fact the action is neither free nor *PD 2*, and hence we will obtain a non-smooth non-Hausdorff manifold (we obtain a non-Hausdorff orbifold).

Remark 2.3 The continuation over M^+ of any geodesic of M^- going through the origin, is not univocally determined as it can be broken at the origin. In fact two different geodesics in M^- may merge into one over M^+ . Despite this pathology, we have a natural way of assigning the continuation, namely, following the straight line over the universal cover.

3 Further considerations about the whole Misner space

Some behaviours of the Misner space can be illustrated in the following figure (compare with Fig. 2).



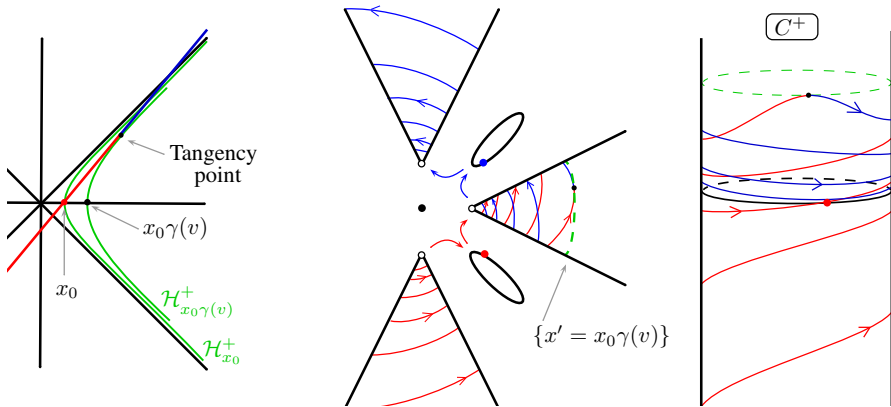
In this figure we see, for instance, why the character of the coordinates (z, ϑ_{\pm}) is exchanged depending on the sign of the z -coordinate in the extended Misner space

C^\pm . It is also important to notice that the spinning happens in the specific sense it does depending on the direction of the corresponding geodesic over the universal cover.

Summarizing, if we reach the apex turning infinitely many times, we will “jump” to the adjacent circle (the right one for the clockwise and the left one for the counterclockwise with respect to the origin), touch it at exactly one point and “jump” again to the next quadrant, according to the rules described by the arrows shown in the previous figure. The other possibility is reaching the apex without turning infinitely many times, which means that over the universal cover we have not crossed any semi-diagonal, hence the geodesic crosses through the origin. The time-like geodesics through the origin must go from Q_1 to Q_4 . Over the glued space they are world lines that reach the apex of M^- without turning infinitely many times, “jump” to the origin and “jump” again to M^+ . The light-like geodesics through the origin are precisely the semi-diagonals D_i . Over the glued space these geodesics turn on one of the lower circles \tilde{D}_1 or \tilde{D}_2 infinitely many times but with a finite affine parameter, then “jump” to the origin and finally “jump” again to the opposite circle as the arrows of the figure suggest. The quotations in the word jump come from the fact that according to the topology, no jump exists.

It is worth mentioning that quite often this space is not depicted completely right [1, 9, 11] as the circles \tilde{D}_i are missing. Probably this lack of precision is not important for many purposes, but it is of capital importance if we want to understand in detail the Misner space.

Remark 3.1 A uniformly accelerated observer over the lateral quadrants Q_2 or Q_3 follows a hyperbola (through translation we may consider that it has the semi-diagonals as its asymptotes). As this kind of hyperbolas over those quadrants are the time-like circles $\mathbb{S}^1 \times \{x = ct\}$ over the lateral cones, those observers describe closed time-like curves over the glued space.



Any inertial observer over the lateral cones will eventually jump to the upper cone in the same way that any observer in the Minkowski space-time that does not pass through the origin will eventually reach the semi-diagonals $\{T = |X|\}$, hence the only way that an observer can remain on the lateral cylinders is by experiencing a

perpetual acceleration. Besides notice that all the time-like geodesics that do not cross the origin will be tangent to some hyperbola \mathcal{H}_r over the lateral quadrants (the slope of these hyperbolas tend to ± 1). Computing the intersection between the geodesic and a generic hyperbola \mathcal{H}_r , and imposing the tangency condition, gives that the maximum hyperbolic radius (and hence the “lateral height”) attained in the lateral cones is:

$$x_{\max} = \frac{x_0}{\sqrt{1-v^2}} = x_0\gamma(v).$$

Over the upper and lower quadrants, it crosses every possible hyperbola and hence over the cones it goes from $t \rightarrow -\infty$ and goes to $t \rightarrow +\infty$ (where the t coordinate is defined separately over each cone). It is interesting also to describe what would happen over the extended space C^+ : the time-like geodesic will turn finitely many times around the lower semi-cylinder, cross the $\{z = 0\}$ level set, turn finitely many times until the maximum of the z coordinate is reached. From this point on, the geodesic falls again towards $\{z = 0\}$ but now turning infinitely many times. Notice in particular that the geodesic is incomplete as C^+ is formed gluing M^- and H^+ through the circle \tilde{D}_1 , but not the upper cone M^+ .

4 g -Boundary

The results presented in the previous sections show that some parts of the extended Misner space, namely the circles \tilde{D}_i and the origin, behave somehow like boundaries of the “adjacent cones” in the sense that every incomplete geodesic of the cones has a limit point that is over the circles or in the origin. The behaviour of these sets resembles that of the g -boundary introduced by Hawking [7] and Geroch [3]. Therefore it is worth to compute the g -boundary of M^- and see if, as expected, we recover the two adjacent circles and the origin obtained with the quotient topology.

The construction of the g -boundary provides a way to built, and glue properly, a boundary $\partial_g M$ to an incomplete semiriemannian manifold (M, g) . The idea is quite tricky as this completion has to be done just making reference to the manifold itself to define something that will be “outside” of it. It is important to notice that the same manifold space M can have different g -boundaries (end-points of the incomplete geodesics regarded in the ambient space) depending on the metric. For instance consider the unitary disk $\mathbb{D} \subset \mathbb{R}^2$:

- If we use the Euclidean metric, all the geodesics are incomplete and the boundary $\partial_g \mathbb{D}$ is \mathbb{S}^1 .
- If we consider it to be the Poincaré’s disk with the hyperbolic metric, then all the geodesics are complete and hence the boundary $\partial_g \mathbb{D}$ is empty.
- If we consider the topological disk as the whole sphere without the north pole $\mathbb{S}^2 \setminus \{p_N\} \subset \mathbb{R}^3$ with the round metric, we see that the boundary $\partial_g(\mathbb{S}^2 \setminus \{p_N\})$ is just a point. Now $\mathbb{S}^2 \setminus \{p_N\}$ and the round metric can be pulled-back to the unitary disk through the stereographic projection $M \rightarrow \mathbb{R}^2$ followed by a contraction $\mathbb{R}^2 \rightarrow \mathbb{D}$. Hence, with this particular metric, $\partial_g \mathbb{D}$ is just one point.

Now we proceed with a quick review of Geroch’s method to build the g -boundary.

4.1 Short review of the construction of the g -boundary

Let (M, g) be a semiriemannian manifold and $G = TM \setminus \{0\} = \{(p, v) \in TM / v \neq 0\}$. For any (p, v) there exists a unique maximal geodesic $\gamma_{(p,v)} : I \rightarrow M$ such that $\gamma_{(p,v)}(0) = p$ and $\dot{\gamma}_{(p,v)}(0) = v$. By geodesic we understand a standard geodesic (not just pregeodesic) defined over $I = [0, b)$ with $b \in \mathbb{R}^+ \cup \{\infty\}$. With this notation, the complete geodesics are the “forward complete” geodesics. The reason for doing this is that we can then bijectively associate the geodesics with the reduced tangent bundle G . We now define the function:

$$\varphi : G \longrightarrow \mathbb{R}^+ \cup \{\infty\}$$

such that $\varphi(p, v)$ is the total affine length (in the forward direction) of the corresponding geodesic $\gamma_{(p,v)}$. Clearly φ is infinite if and only if the geodesic in question is complete. We now define the sets:

$$G_I = \{x \in G / \varphi(x) < \infty\}, \quad H = G \times \mathbb{R}^+, \\ H_+ = \{(p, v, \tau) \in H / \tau < \varphi(p, v)\}.$$

G_I is formed by the incomplete geodesics, H is the set of all possible geodesics and all possible affine parameters, while H_+ restricts the possible affine parameters to those ones where the geodesic is well defined. Therefore we have a well defined map:

$$\Psi : H_+ \longrightarrow M \\ (p, v, \tau) \longmapsto \gamma_{(p,v)}(\tau)$$

We now topologize the set G_I . For a given open set $U \subset M$, we define the subset of G_I :

$$S(U) = \{(p, v) \in G_I / \text{there exists } A \in N_H(p, v, \varphi(p, v)) \text{ with } \Psi(A \cap H_+) \subset U\},$$

where $N_H(x) = \{W \subset H / \text{open with } x \in W\}$ is the set of open neighbourhoods of x in H . The idea behind the definition of $S(U)$ is that if U is “attached to the boundary of M ”¹, then $S(U)$ is formed by the geodesics $\gamma = (p, v)$ such that γ itself and all close enough geodesics finish their tour on U (and hence close to the “boundary of M ”). The next proposition gathers some important properties whose proof can be found in [3]:

Proposition 4.1

- $S(M) = G_I$.
- $S(U_1) \cap S(U_2) = S(U_1 \cap U_2)$.
- *If U has compact closure and is sufficiently small, then $S(U) = \emptyset$ i.e. if U is not “attached to the boundary” then the “end” of the incomplete geodesics lies outside U .*

¹ The quotes recall that there exists yet no boundary! However, if we have in mind the examples of the beginning of this section, the quoted ideas work pretty well.

The first two properties imply that $\beta = \{S(U) / U \text{ open in } M\}$ is a base of a topology over G_I (the one formed with all possible unions that we denote \mathcal{T}_β). The topology \mathcal{T}_β allows us to define the following equivalence relation:

Definitions 4.2 Two points $\gamma_1, \gamma_2 \in G_I$ are equivalent ($\gamma_1 \sim \gamma_2$) if for every $U_1 \in N_{\mathcal{T}_\beta}(\gamma_1)$ we have $\gamma_2 \in U_1$ and for every $U_2 \in N_{\mathcal{T}_\beta}(\gamma_2)$ we have $\gamma_1 \in U_2$.

4.3 The set ∂ of all equivalence classes $[\gamma]$, with the quotient topology over G_I , is called **g -boundary**:

$$\partial = \{[\gamma] / \gamma \in G_I\}.$$

We will denote by π the quotient map $\pi : G_I \rightarrow \partial$ such that $\pi(\gamma) = [\gamma]$.

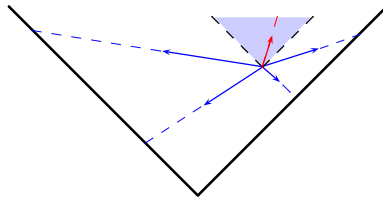
4.4 We define the **completed manifold** $\widehat{M} = M \sqcup \partial$ (where we use \sqcup to remark that ∂ is an abstract set formed by equivalence classes, so $A \sqcup B$ will mean $A \subset M$ and $B \subset \partial$).

4.5 A subset $U \sqcup \Gamma$ is said to be **open in \widehat{M}** if $U \subset M$ and $\Gamma \subset \partial$ are open sets in M and ∂ respectively, and $\pi^{-1}(\Gamma) \subset S(U)$.

The class of equivalence relates geodesics that intuitively have the same “end-point”, and hence ∂ is somehow the set of end-points of the incomplete geodesics. The last definition (which indeed defines a base of a topology) tells us how the abstract boundary ∂ is attached to the original space M , it demands the open set Γ to be formed by end-points of incomplete geodesics that get into U and remain there until the end of their parameters.

4.2 g -boundary of the Misner space

In this section we will apply the construction of the g -boundary to the Misner space M^- and study how the resulting topology is related with the quotient topology obtained in Sect. 2.2. Notice that, up to some signs, we can work on any cone, so to simplify the notation we will consider from now on M^+ . Actually we are going to work in the Minkowski upper quadrant Q_4 with (t, x) coordinates and prove that its g -boundary is, precisely, $\partial Q_4 = \{(|x|, x) / x \in \mathbb{R}\}$. The proof considering the identification goes with slightly change as we will see. The idea of the proof relies on the fact that we are working with some coordinates that cover not only Q_4 but the whole \mathbb{R}^2 . This allows us to “give explicit coordinates” to the end points.



The geodesics of the Minkowski space-time are straight-lines $\gamma_{(p,v)}(\tau) = p + \tau v$ and, in Q_4 , the incomplete ones are those that hit the semidiagonals $\mathcal{D} = \{(|x|, x) / x \in \mathbb{R}\}$ when moving forward. The previous picture shows that a geodesic is incomplete

if and only if its velocity vector v points towards \mathcal{D} i.e. $v \notin \overline{Q_4}$ (remember that we consider only what happens for positive values of the parameter). Therefore:

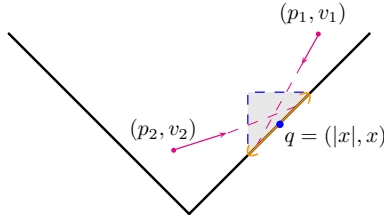
$$G_I = \{(p, v) \in \mathbb{R}^4 / p \in Q_4 \text{ and } v \notin \overline{Q_4}\} = Q_4 \times (\overline{Q_4})^c .$$

Now for a given initial data $(p, v) = ((t, x), (v_t, v_x)) \in G_I$ we want to obtain $\varphi(p, v)$ the length of the parameter and also $\xi(p, v)$, the x -coordinate of the hit point. Studying the different possibilities (when it hits the right semidiagonal, the left one or the origin) it is not hard to obtain:

$$\begin{aligned} \varphi : G_I &\longrightarrow \mathbb{R}^+ & \xi : G_I &\longrightarrow \mathbb{R} \\ (p, v) &\longmapsto \frac{t - \varepsilon x}{\varepsilon v_x - v_t} & (p, v) &\longmapsto \frac{t v_x - x v_t}{\varepsilon v_x - v_t} \end{aligned}$$

where $\varepsilon := \text{sign}(t v_x - x v_t) \in \{-1, 0, 1\}$ tells us where the geodesic hits: -1 for the left semidiagonal, 1 for the right one and 0 for the origin. Notice that the denominator never vanishes as $v \notin \overline{Q_4}$.

At this point we have to compute the sets $S(U)$ for any given open U , but it will be enough to focus on the boxes of Q_4 of side $2s$ around a point $(t, x) \in \mathbb{R}^2$ i.e. $B((t, x), s) := [I(t, s) \times I(x, s)] \cap Q_4$ where $I(x, \delta) = (x - \delta, x + \delta)$. According to the third point of Proposition 4.1, if we consider a point $p = (t, x) / \in \mathcal{D}$, then $S(B(p, s)) = \emptyset$ for s small enough. For bigger s , $S(B(p, s))$ turns out to be the same as if we consider the balls $B(p', s')$ and $B(p'', s'')$ where $p' = (x', x')$ and $p'' = (-x'', x'')$ are the projections of p over the semidiagonals \mathcal{D} and s', s'' (possibly zero) are given by the intersection of $B(p, s)$ with \mathcal{D} . Hence we must focus on points $p = (|x|, x)$ and we will simply denote $B(x, s) = B((|x|, x), s) = I(|x|, s) \times I(x, s)$.



Now we are going to state a fundamental result that relates the space Q_4 with its boundary ∂Q_4 . It says that the geodesics finishing in an interval of the ∂Q_4 , are the same that the ones entering and remaining until the end of their parameter into the ball attached to this interval, which geometrically is obvious (but the analytical proof is quite cumbersome). When no confusion is possible, we will omit the variables and write simply $\varphi = \varphi(p, v)$ and $\xi = \xi(p, v)$.

Proposition 4.6 $S(B(x_0, s)) = \xi^{-1}(I(x_0, s))$ where we take $s < |x_0|$ if $x_0 \neq 0$.

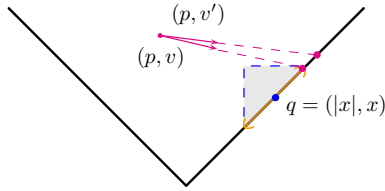
Sketch of the Proof

“ \subset ” Let $(p, v) \in S(B(x_0, s))$, then by definition, there exists

$$U = I(t, \delta) \times I(x, \delta) \times I(v_t, \delta) \times I(v_x, \delta) \times I(\varphi, v) \in N_H(p, v, \varphi)$$

such that $\psi(U \cap H_+) \subset B(x_0, s)$. Thus

$$|\xi - x_0| = |x + v_x(\varphi - \tau) - x_0 + v_x \tau| \leq |\pi_x(\psi(p, v, \varphi - \tau)) - x_0| + |v_x| \tau < s + |v_x| \tau$$



where π_x is the projection over the x coordinate and $\tau \in (0, \varphi)$ is small to ensure that $(p, v, \varphi - \tau) \in H_+$ and $\psi(p, v, \varphi - \tau) \in B(x_0, s)$. As this inequality holds for every small τ , in particular $|\xi - x_0| \leq s$ and it only remains to prove that the equality is not possible. But if we assume so, we can always take another geodesic (p, v') arbitrarily close to (p, v) such that it finishes outside the interval, and hence $(p, v) \notin S(B(x_0, s))$.

“ \supset ” Let $(p, v) = ((t, x), (v_t, v_x)) \in \xi^{-1}(I(x_0, s))$, thus $\xi(p, v) = x_0 + \lambda$ with $|\lambda| < s$. We consider

$$U = I(t, \delta) \times I(x, \delta) \times I(v_t, \delta) \times I(v_x, \delta) \times I(\varphi, v) \in N_H(p, v, \varphi),$$

$$v = \frac{1}{m|v_x|} \left(\frac{n-2}{n}s - |\lambda| \right) > 0,$$

where we take n big enough such that $v > 0$ and besides, if $v_x = 0$ we consider just $v = 1$. Some inequality manipulations based on geometric considerations (see the previous pictures) show that we can take δ (by choosing a big enough m) and v small enough such that $\psi(U \cap H_+) \subset B(x_0, s)$. \square

We saw in the previous section that $\beta_1 = \{S(U) / U \in \mathcal{T}\}$ is a base of a topology (where \mathcal{T} denotes the usual topology of $Q_4 \subset \mathbb{R}^2$). We can also define $\beta_2 = \{S(B(x, s)) / x \in \mathbb{R}, s > 0\}$. It is clear that for any $(p, v) \in G_I$ we have that $(p, v) \in \xi^{-1}(I(\xi, s)) = S(B(\xi, s))$ and so

$$G_I = \bigcup_{x \in \mathbb{R}} \bigcup_{s > 0} S(B(x, s)).$$

This fact, together with the second property of Proposition 4.1, implies that β_2 is also a base of a topology, and we will see in next lemma, that indeed they induce the same topology. Finally let us remark that if we consider the base of Q_4 given by $\beta_3 = \{B = B((t, x), s) / (t, x) \in Q_4, s < d((t, x), \partial Q_4)\}$, then every $S(B)$ is empty as these open sets are not “attached to the boundary” (here d denotes the Euclidean distance).

Lemma 4.7

- $\mathcal{T}_{\beta_2} = \mathcal{T}_{\beta_1}$.

- Let $\gamma_1, \gamma_2 \in G_I$, then $\gamma_1 \sim \gamma_2$ if and only if $\xi(\gamma_1) = \xi(\gamma_2)$.

Proof

- As $\beta_2 \leq \beta_1$ then $\mathcal{T}_{\beta_2} \leq \mathcal{T}_{\beta_1}$. If we now consider a basic open set $S(U) \in \beta_1$ and $(p, v) \in S(U)$, it is enough to prove that there exists some $S(B) \in \beta_2$ such that $(p, v) \in S(B) \subset S(U)$. Again we have $(p, v) \in \xi^{-1}(I(\xi, s)) = S(B(\xi, s))$, and we can take s small enough in such a way that $B(\xi, s) \subset U$, which would imply $(p, v) \in S(B(\xi, s)) \subset S(U)$.
- The left implication is clear according to the definition. For the other implication let us suppose that $r = \xi(\gamma_2) - \xi(\gamma_1) > 0$, then we consider the open set $U = \xi^{-1}(I(\xi(\gamma_1), r/2)) \in N_{\mathcal{T}_{\beta_2}}(\gamma_1)$. As $|\xi(\gamma_1) - \xi(\gamma_2)| = r > r/2$ then $\gamma_2 \notin U$ and therefore $\gamma_2 \not\sim \gamma_1$. \square

Notice that if we consider M^+ (i.e. Q_4 with the identification provided by G_{θ_0}), then Proposition 4.6 is still valid as it is a set equality. In particular, saturating (i.e. considering the union), we have:

$$S(S_{\sim}[B(x_0, s)]) = \xi^{-1}(S_{\sim}[I(x_0, s)]) .$$

Thus the first point of Lemma 4.7 is also valid in M^+ . The second one becomes $\gamma_1 \sim \gamma_2$ if and only if

$$\left(\text{sign}(\xi(\alpha)) = \text{sign}(\xi(\gamma_2)) = 0 \right) \\ \vee \left(\text{sign}(\xi(\alpha)) = \text{sign}(\xi(\gamma_2)) \neq 0 \wedge \log |\xi(\gamma_1)| \equiv \log |\xi(\gamma_2)| \pmod{\theta_0} \right)$$

as a consequence of the exponential behaviour of the group action over the semidiagonals.

Lemma 4.8 *The g -boundary ∂ of Q_4 is homeomorphic to \mathbb{R} .*

Proof $\xi : G_I \rightarrow \mathbb{R}$ is surjective as the geodesics fill the whole plane, continuous as can be seen from the explicit expression over $G_I = Q_4 \times (\overline{Q_4})^c$, and open as the gradient $\nabla \xi$ does not vanish anywhere in $G_I = Q_4 \times (Q_4^c)$ (it is then a submersion). These three properties imply that ξ is a quotient map. Hence

$$G_I / \sim_{\xi} \cong \mathbb{R} ,$$

where \sim_f is the equivalence relation that relates two points x, y if $f(x) = f(y)$. Finally notice that \sim_{ξ} is precisely \sim according to Lemma 4.7, thus:

$$\partial \stackrel{\text{def}}{=} G_I / \sim = G_I / \sim_{\xi} \cong \mathbb{R} .$$

In order to take into account the boost identification defined by G_{θ_0} , we have to consider the map $\tilde{\xi} : G_I \rightarrow \mathbb{S}_+^1 \sqcup \mathbb{S}_-^1 \sqcup \{\star\}$ (where $\{\star\}$ is a one set point) mapping $(p, v) \mapsto \exp(i \log(\pm\xi) + i \frac{2\pi}{\theta_0}) \in \mathbb{S}_\pm^1$ when $\text{sign}(\xi(p, v)) = \pm 1$ and $(p, v) \mapsto \star$ if $\xi(p, v) = 0$. It is open as it is the composition of ξ with the projection, which is open. Considering this quotient map we see that the g -boundary $\tilde{\partial}$ of M^+ satisfies

$$\tilde{\partial} \cong \mathbb{S}_+^1 \sqcup \mathbb{S}_-^1 \sqcup \{\star\}.$$

Finally, the following theorem connects the results presented in Sect. 2 with the g -boundary:

Theorem 4.9 \widehat{Q}_4 is homeomorphic to \overline{Q}_4 with the usual topology.

Proof Let us recall that $\widehat{Q}_4 = Q_4 \sqcup \partial$ and its topology \mathcal{T} is given by: $U \sqcup \Gamma$ is open over \widehat{Q}_4 if $U \subset Q_4$ and $\Gamma \subset \partial$ are open sets and $\pi^{-1}(\Gamma) \subset S(U)$. Now we define:

$$\begin{aligned} \Phi : \widehat{Q}_4 &\longrightarrow (\overline{Q}_4, \mathcal{T}_{\text{usual}}) \\ x \in Q_4 &\longmapsto x \in Q_4 \\ \alpha \in \partial &\longmapsto (|\xi(p, v)|, \xi(p, v)) \in \partial Q_4 \end{aligned}$$

where $\alpha = [(p, v)]$. Φ is well defined as $\xi(p, v)$ is the same for every representative (p, v) of α and so it is bijective. Working with the open sets and the properties of ξ , we obtain that it is a homeomorphism. \square

Again it follows the analog result when $M^+ = Q_4/G_{\theta_0}$ is considered, where the Φ function is defined similarly, leaving the interior points unchanged and the points of $\tilde{\partial}$ are mapped via the function $\tilde{\xi}$. This completes the proof of the fact that the g -boundary recovers the boundary and the topology obtained when we consider the quotient of a closed quadrant under the group generated by a discrete boost.

5 Conclusions

In this paper we have explicitly obtained the quotient topology of the complete Misner space $\mathbb{R}^{1,1}/\text{boost}$. We find a T0 but not T1 space that is not smooth at the origin, because it is a fixed point under the action of Lorentz boosts. When the origin is removed a T1 but not T2 smooth space is obtained and finally, when just half plane over/under a diagonal is considered, we obtain a T2 smooth manifold. The behaviour of the geodesics with respect to the four circles (obtained by making the identifications over the four open semi-diagonals) strongly resembles to the behaviour of a g -boundary, so we have computed the g -boundary of the Misner space and its associated topology. We have found that indeed there is a natural identification of the g -boundary ∂ of a cone \widetilde{Q}_i , with the circles and the origin of the complete Misner space, and that the topology of \widehat{Q}_4 is the same as the (quotient) topology of $\widetilde{Q}_4 \cup \widetilde{D}_3 \cup \widetilde{D}_4 \cup \{0\}$.

Acknowledgments The authors are very grateful to Juan Margalef Roig and Miguel Sánchez Caja for their useful comments and support, and specially to Fernando Barbero and Robert Geroch for their patience, comments and priceless help. This work has been supported by the Spanish MINECO research Grant FIS2012-34379 and the Consolider-Genio 2010 Program CPAN (CSD2007-00042).

Appendix A: Some topological results

A.1 Separation axioms

For a given topological space (M, \mathcal{T}) and every $p \in M$ we denote $N(p) = \{U \subset M / \text{open s.t. } p \in U\}$ the set of all open neighbourhoods of p . Sometimes to emphasize we will write $N_{\mathcal{T}}(p)$ or, if the topology is obvious from the context, $N_M(p)$.

Definitions Let M be a topological space, we say that:

A.1 M is **T2** (or **Hausdorff**) if for every different $x, y \in M$ there exist $U_1 \in N(x)$ and $U_2 \in N(y)$ such that $U_1 \cap U_2 = \emptyset$.

A.2 M is **T1** if for every different $x, y \in M$ there exist $U_1 \in N(x)$ and $U_2 \in N(y)$ such that $\begin{cases} x \notin U_2 \\ y \notin U_1 \end{cases}$

A.3 M is **T0** if given two distinct points $x, y \in M$ there exists $U_1 \in N(x)$ such that $y \notin U_1$ OR there exists $U_2 \in N(y)$ such that $x \notin U_2$.

Remark

A.4 $T2 \Rightarrow T1 \Rightarrow T0$

A.5 A space M is T1 if and only if every one-point set $\{p\}$ is closed.

A.6 A space M is not T0 if and only if two points have exactly the same neighbourhoods.

A.2 Some results on quotient topologies

Definition A.7 Given an equivalence relation \sim over M , we define the **quotient topology** as the finest topology \mathcal{T}' over M / \sim such that $\pi : (M, \mathcal{T}) \rightarrow (M / \sim, \mathcal{T}')$ is continuous. Such topology is denoted as \mathcal{T} / \sim .

In order to work with this topology, it is useful to introduce a more explicit characterization that can be found in almost any book of general topology [13,15,18], but first we need some definitions:

Definitions A.8 We call the **saturation** of $U \subset M$ to $S_{\sim}[U] \equiv \pi^{-1}(\pi(U))$ where π is the natural projection.

A.9 We say that a subset $U \subset M$ is **saturated** if $S_{\sim}[U] = U$.

Lemma A.10

- $p(p^{-1}(B)) = B$ for every $B \subset M / \sim$
- $\mathcal{T} / \sim = \{p(H) / H \in \mathcal{T}_M \text{ and it is saturated}\}$

One might expect that the saturated open sets can be obtained by saturating all the open sets, unfortunately we will obtain in general some saturated subsets that are not open. For example, the space I / \sim with the extreme points of $I = [0, 1]$ identified has the open set $J = [0, 1/2)$, but its saturation $S_{\sim}J = [0, 1/2) \cup \{1\}$ is not. Fortunately the equivalence relations that we use in that paper are quite particular in this respect and this problem will not arise.

Definition A.7 Given a homeomorphism $f : M \rightarrow M$, we define the **f -equivalence relation** as:

$$x \sim y \text{ if and only if there exists some } n \in \mathbb{Z} / y = f^n(x)$$

which can be summarized by saying that $x \sim f^n(x)$ for every $n \in \mathbb{Z}$.

$G = \langle f \rangle = \{f^n \mid n \in \mathbb{Z}\}$ is a cyclic subgroup of the group $\text{Hom}(M)$ of homeomorphisms of M .

Remark A.12 The saturation of any open set U is always open as can be seen using the following identity:

$$S_{\sim} = \bigcup_{n=-\infty}^{\infty} f^n$$

where both sides have to be thought as operators acting on the subsets of M .

Finally we can characterize the quotient topology and a base of it in a suitable way for our purposes. As it is essential for the paper and we have not found any proof of this characterization (for this particular case), we provide a proof in the following lemma.

Lemma A.13 Let $f : M \rightarrow M$ be an homeomorphism and \sim_f its equivalence relation (see proof of lemma 4.8), then:

- $\mathcal{T} / \sim_f = \{p(S_{\sim_f}[G]) \mid G \in \mathcal{T}\}$
- If β is a base of \mathcal{T} , then $\beta_{\sim_f} = \{p(S_{\sim_f}[B]) \mid B \in \beta\}$ is a base of \mathcal{T} / \sim_f .

Proof

- “ \supset ” Let us denote $\mathcal{T}' = \{p(S_{\sim_f}[G]) \mid G \in \mathcal{T}\}$, and let $U \in \mathcal{T}'$. Then there exists some $G \in \mathcal{T}$ such that $U = p(S_{\sim_f}[G])$. As we have seen on Remark A.12:

$$H \equiv S_{\sim_f}[G] = \bigcup_{n \in \mathbb{Z}} f^n(G)$$

which is open, as f is a homeomorphism, and saturated by definition. Therefore $U = p(H)$ for some $H \in \mathcal{T}$ saturated, so $U \in \mathcal{T} / \sim_f$ according to the second point of Lemma A.10.

“ \subset ” Let $U \in \mathcal{T} / \sim_f$, then $U = p(H)$ for some $H \in \mathcal{T}$ saturated, as it is saturated, then by definition we have $H = S_{\sim_f}[H]$. Thus taking $G = H$ we have $U = p(G) = p(S_{\sim_f}[G])$ for some $G \in \mathcal{T}$ and therefore $U \in \mathcal{T}'$.

- First notice that the fact that $\beta \subset \mathcal{T}$ implies by the previous point that $\beta_{\sim_f} \subset \mathcal{T} / \sim_f$ as it is required to be a base. Now let us consider a generic open set U

of \mathcal{T} / \sim_f , then again by the previous point there exists some $G \in \mathcal{T}$ such that $U = p(S_{\sim_f}[G])$. As β is a base of \mathcal{T} , we have $G = \bigcup B_i$ for some $B_i \in \beta$, thus:

$$\begin{aligned} U &= p(S_{\sim_f}[G]) = p\left(S_{\sim_f}\left[\bigcup_{i \in I} B_i\right]\right) \stackrel{\text{A.12}}{=} \\ &= p\left(\bigcup_{n \in \mathbb{Z}} f^n\left[\bigcup_{i \in I} B_i\right]\right) \stackrel{\star}{=} p\left(\bigcup_{n \in \mathbb{Z}} \bigcup_{i \in I} f^n(B_i)\right) = \\ &= p\left(\bigcup_{i \in I} \bigcup_{n \in \mathbb{Z}} f^n(B_i)\right) \stackrel{\text{A.12}}{=} p\left(\bigcup_{i \in I} S_{\sim_f}[B_i]\right) \stackrel{\star}{=} \bigcup_{i \in I} p(S_{\sim}[B_i]) \end{aligned}$$

where on the \star equalities we have used $F(\bigcup A_i) = \bigcup F(A_i)$ for arbitrary unions. \square

So finally we have reached a very convenient way to handle the quotient topology in our particular case: we need to consider a local base for every $x \in M$, saturate those neighbourhoods, and project them through $p : M \rightarrow M / \sim_f$ to obtain a base of the quotient topology, which is enough to describe the whole topology. We will make extensive use of this idea in the paper.

Appendix B: Actions

We consider an action given by homeomorphisms, which introduces naturally an equivalence relation identifying the points with its images under the action. The quotient defined by this equivalence relation is usually denoted by $M / G \equiv M / \sim$. Our aim now is to determine what conditions have to be fulfilled by the action and the space in order to obtain a manifold. As we are just interested in $G \subset \text{Hom}(M)$ (specifically $G = \{f^n\} / n \in \mathbb{Z} \subset \text{Hom}(\mathbb{R}^2)$), we can forget about continuity issues.

Definitions B.1 An action is **free** if for every $x \in M$ we have $g(x) \neq x$ for all $g \in G \setminus \{e\}$. Free means that g has no fixed points if $g \neq e$ i.e. it moves all the points.

B.2 An action is **properly discontinuous** if:

PD1: For every $x \in M$ there exists some neighbourhood $U \in N(x)$ such that $g(U) \cap U = \emptyset$ for all $g \in G$ satisfying $g(x) \neq x$.

PD2: If we have $x, y \in M$ not in the same orbit ($x \notin \mathcal{O}(y)$), there exist neighbourhoods $U \in N(x)$ and $V \in N(y)$ such that $g(U) \cap V = \emptyset$ for every $g \in G$.

Intuitively, *PD1* means that if g moves points, then it moves also their neighbourhoods. *PD2* means that points from different orbits can be separated.

On [16, chap.7] it is proven that given a manifold M and a subgroup $G \subset \text{Diff}(M)$ of diffeomorphisms, if the action of G on M is free and properly discontinuous, then M / G is a Hausdorff manifold. From the proof it follows that the condition *PD2* implies Hausdorff. Hence if the action is free but only verifies *PD1*, we obtain a smooth, not necessarily Hausdorff, manifold (see also [8, 5 . 8]).

References

1. Durin Bruno, B., Pioline, B.: Closed strings in misner space: a toy model for a big bounce?, String theory: from gauge interactions to cosmology. arXiv:hep-th/0501145v2, Springer, pp. 177–200 (2006)
2. Flores, J.L., Herrera, J., Sánchez, M.: Hausdorff separability of the boundaries for spacetimes and sequential spaces, Preprint (2014)
3. Geroch, R.: Local characterization of singularities in general relativity. *J. Math. Phys.* **9**, 450 (1968)
4. Geroch, R.: What is a singularity in general relativity? *Ann. Phys.* **48**(3), 526–540 (1968)
5. Geroch, R., Can-bin, L., Wald, R.M.: Singular boundaries of space–times. *J. Math. Phys.* **23**, 432 (1982)
6. Hajicek, P.: Embedding of singularities. *Gen. Relativ. Gravit.* **1**(1), 27–29 (1970)
7. Hawking, S.W.: Singularities and the Geometry of Space–Time. Unpublished Essay Submitted for the Adams Prize. Cambridge University, Cambridge (1966)
8. Hawking, S.W., Ellis, G.F.R.: *The Large Scale Structure of Space–Time*. Cambridge University Press, Cambridge (1973)
9. Hikida, Y., Nayak, R.R., Panigrahi, K.L.: D-branes in a big bang/big crunch universe: Misner space. *J. High Energy Phys.* arXiv:hep-th/0508003v2 2005(09),023 (2005)
10. Javaloyes Victoria, M.A., Sánchez Caja, M.: *An Introduction to Lorentzian Geometry and its Applications*, Ed. Universidad de Sao Paulo, (2010)
11. Jonsson, R.M.: Visualizing curved spacetime. *Am. J. Phys.* arXiv:0708.2483v1
12. Lévy-Leblond, J.M.: Speed(s). *Am. J. Phys.* **48**, 345–347 (1980)
13. Margalef Roig, J., Outerelo Domínguez, E.: *Introducción a la topología*, Ed. Complutense, (1993)
14. Misner, C.W.: Taub-NUT as a counterexample to almost anything. *Tech. Rep. Uni. Maryland* **529**, 1–22 (1965)
15. Munkres, J.R.: *Topology*, vol. 2. Prentice Hall, Upper Saddle River (2000)
16. O’Neill, B.: *Semi-Riemannian Geometry: With Applications to Relativity*. Academic Press, New York (1983)
17. Thorne, K.S.: Misner space as a prototype for almost any pathology, directions in general relativity: *Papers in Honor of Charles Misner*, 1, vol. 1, p. 333 (1993)
18. Willard, S.: *General Topology*. Courier Dover Publications, New York (2004)